


SAINSBURY
CENTRE

Living Art Sharing Stories

SUMMER
BROCHURE
2025

An abstract painting of a sea, featuring a mix of blue, green, and yellow tones with visible brushstrokes and textures. The colors are layered and blended, creating a sense of movement and depth. The overall composition is dynamic and expressive.

CAN THE
SEAS
SURVIVE
US?



Koen Taselaar, *Radical Furniture For Radical Times II*, 2024

SAINSBURY CENTRE SUMMER BROCHURE 2025

sainsburycentre.ac.uk



The seas, in their magnificence and mystery, have always fascinated human imagination. They possess immense powers of creation and destruction, sustaining life both within themselves and across the planet. As a species, humans are intimately connected with the seas and have long integrated them with identity, tradition and culture. We are part of the oceans simply by virtue of our existence. Yet these seas upon which we rely are under serious threat. At the Sainsbury Centre, we are exploring this uncertain future of the seas, immersing visitors within a series of innovative exhibitions to answer the fundamental question: *Can the Seas Survive us?*

Delve into *A World of Water*, which brings together British

and international artists to witness the wonder and complexity of marine life and ecosystems and the ways in which people have transformed them in the modern age. Combining local and global perspectives, this exhibition highlights humanity's delicate and enduring relationship with the sea, inviting questions about the imminent need to safeguard our waters.

The Sainsbury Centre is also hosting *Darwin in Paradise Camp: Yuki Kihara*, which re-imagines the role of European history in popular perceptions of the Pacific. From Charles Darwin to Paul Gauguin how have 'outsider' views of Samoa and the South Seas pervaded through time? Captivating artworks, animal specimens and archival material enable

this radical exhibition to explore the importance of personal human connections to ocean and the value of deep inter-generational knowledge that underpin the success of these relationships.

This summer, *Sea Inside* considers what it is to be part of the sea and to be within it. Through this exhibition, visitors can experience the power of the seas in the context of their own life. The show challenges the idea of the seas as unknowable and "other" focusing instead on the intimacy and deep emotion humans have always experienced in connection with them. Our artists invite you to come close, be enclosed within—experience life as a shell on a seabed, exist inside the belly of a whale.

Discover the expanse of the ocean within familiar bodies and architectural spaces, engage in stimulating conversations within our *Space for Dialogue*.

Jago Cooper
Executive Director



ABOVE: Sainsbury Centre Director, Jago Cooper. Photo: Kate Wolsteholme

CAN THE SEAS SURVIVE US?

Summer 2025



The Sainsbury Centre continues its innovative series of investigative exhibitions in 2025 with a new programme that charts a course through the story of the world's oceans and the precarious future they may be heading towards.

Featuring contemporary art, historical paintings, ancient atlases and maps from across the globe, the season explores humanity's enduring

and complex relationship with the sea. Three concurrent exhibitions explore *Can the Seas Survive Us?*, examining the choices shaping our future due to climate change, while emphasising the vital importance of the oceans and the life beneath the waves for the viability of our shared future.

FEATURED EXHIBITIONS

A World of Water
Until 3 August 2025

Darwin in Paradise Camp:
Yuki Kihara
Until 3 August 2025

Sea Inside
7 June – 26 October 2025

EXHIBITION TOURS
Free guided tours Tuesday-Sunday, 11.30am. Reserve your place at Gallery Reception.

Visit our website for more on these activities between March and September 2025.

A WORLD OF WATER

Until 3 August 2025

A day at the seaside or rain at Wimbledon. So much of our shared experience of the British summer involves water. But what would the world be like without water, or more critically, without our seas and oceans and all the life force within it? The Sainsbury Centre aims to unlock a sense of urgency, recognising that the precarious nature of our waters, and possible geopolitical conflicts caused by them, will be as significant in this century as oil was in the 20th.

A World of Water brings together works by British and international artists from as early as 1540 to the present day, who have all offered a unique perspective of evolving marine ecosystems and oceanic habitats. Taking the North Sea and the historical relationship between Norfolk and the Netherlands as its starting point, the exhibition looks at the human impact on the sea.

The exhibition encourages visitors to understand the complexity of sea and marine life, whilst encouraging a collective, global effort to mitigate the



impacts of climate change and support action to restore marine ecosystems.

Featuring artworks by Maggi Hambling (b.1945), Eva Rothschild (b.1971), Julian Charrière (b.1987), John Crome (1768–1821), Olafur Eliasson (b.1967), Josh Kline (b.1979), George Vincent (1796–1832), Hendricus Theodorus Wijdeveld (1885–1987), and many more. *A World of Water* delves into humanity's profound and intricate connection with the sea, raising pivotal questions about the world's

governments' responses to climate change, coastal erosion, and environmental degradation.

Supported by:

Art Fund



Kingdom of the Netherlands

John Ellerman Foundation

HUDSONArchitects



Supported using public funding by
ARTS COUNCIL ENGLAND

DARWIN IN PARADISE CAMP:

YUKI KIHARA

Until 3 August 2025



Darwin in Paradise Camp, is a new exhibition by Yuki Kihara (b.1975), an interdisciplinary artist of Sāmoan and Japanese descent. The exhibition features the UK premiere of *Paradise Camp* (2022), a photographic series first presented at the Aotearoa New Zealand Pavilion in the 59th Venice Biennale in 2022, alongside original works by Paul Gauguin and a newly commissioned video work, *Darwin Drag* (2025).

Paradise Camp upcycles the works of French painter Paul Gauguin (1848–1903). Through archival research, Kihara believes Gauguin's paintings made during his time in Tahiti and

the Marquesas Islands were inspired by colonial photographs taken in Sāmoa.

Paradise Camp is augmented by Kihara's ground-breaking new video work, *Darwin Drag* (2025). Following new research by writers such as Ross Brooks and Joan Roughgarden, Kihara's project reveals how famed evolutionary biologist Charles Darwin (1809–1882) manipulated some of his findings to suggest non-heteronormative species and same-sex attraction in animals was rare and unnatural, in order to conform with the conservative values of the Victorian period.

The exhibition foregrounds how a closer relationship between humanity and the seas can save the communities most at risk of the human-caused impact on the seas, as well as the seas themselves.

TICKETS

Our universal ticket is available at Gallery Reception.

Supported by:
British Council and AHRC Impact Acceleration Account administered by UEA.

Supported by



SEA INSIDE

7 June–26 October 2025



Have you ever wondered what it feels like to live underwater, to be inside a shell, or even the belly of a whale?

While some humans have pursued life above or under water – through seafaring, research, fishing or diving – others have and still are subjected to the horrors of forced or desperate maritime crossings. Yet the sea has often been viewed as a mysterious 'other',

with its expansive surface and seemingly infinite depths dominating marine imagery in the history of Western art. Conversely, artworks in this exhibition explore the ways the oceans have been domesticated, reimagined on a bodily scale and brought inside to be tamed, contained or better understood.

Sea Inside turns our oceanic gaze towards the sea's more intimate spaces – whether

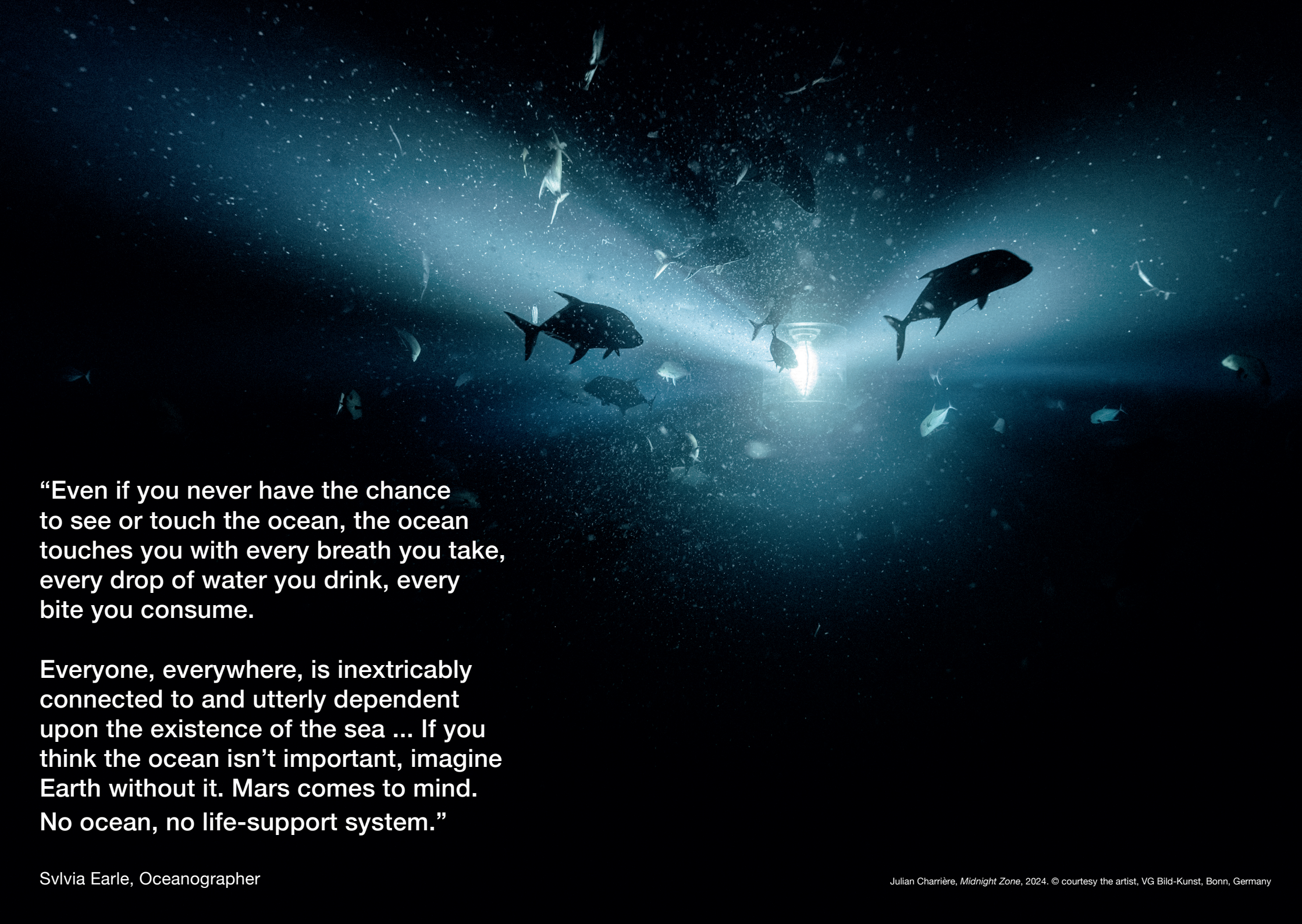
physical, psychological or imaginary – and dives into shared watery origins, Indigenous ways of life and the items we remove from the sea to display on land.

TICKETS

Our universal ticket is available at Gallery Reception.

Supported by:

HUDSONArchitects



“Even if you never have the chance to see or touch the ocean, the ocean touches you with every breath you take, every drop of water you drink, every bite you consume.

Everyone, everywhere, is inextricably connected to and utterly dependent upon the existence of the sea ... If you think the ocean isn't important, imagine Earth without it. Mars comes to mind. No ocean, no life-support system.”

NEW SEASON: CAN WE STOP KILLING EACH OTHER?

2 August 2025–17 May 2026



Can We Stop Killing Each Other? wrestles with one of the darkest and deadliest aspects of humanity. This series of exhibitions and an artist residency will explore the fundamental question of why humans are led to kill and how art and culture has grappled with, or even aggravated, our proximity to violence. The season will be accompanied by a book published by Kulturalis.

FEATURED EXHIBITIONS

Tiaki Ora ∞ Protecting Life:
Anton Forde
2 August 2025 – 19 April 2026

Eyewitness
20 September 2025 –
15 February 2026

Roots of Resilience:
Tesfaye Urgessa
20 September 2025 –
15 February 2026

Reflections on Peace
20 September 2025 –
11 January 2026

Seeds of Hate and Hope
28 November 2025 –
17 May 2026

ABOVE: Luca Giordano, *The Brazen Serpent*, c.1690
© Compton Verney. Photo: Jamie Woodley

TIAKI ORA ∞ PROTECTING LIFE: ANTON FORDE

2 August 2025–19 April 2026



Anton Forde's (b.1973, Invercargill, Aotearoa (New Zealand)) monumental installation of 81 over-life-size figures, *Papare Eighty.one* (2024), is shown in the UK for the first time in a new site-specific configuration and incorporating a Māori figure from the late 18th Century to early 19th Century, held in the Sainsbury Centre's collection.

The wooden figures (pou), hand carved by Forde at 8.2 feet tall, are presented in a defensive V-shaped formation inspired by migratory birds' united flying formation, wear garments woven by kaiwhatu (traditional Maori weaver) Shiree Reihana that indicate status, as well as a nephrite teardrop necklace, seen as a token of sympathy and shared emotion.

Forde's work is in memoriam of the peaceful actions of the Māori community at Parihaka, New Zealand in November 1881, in the face of a British colonial invasion. It is a call for *kotahitanga*: unity, togetherness and solidarity. It shows that collective action can safeguard the future of our communities for generations to come, without need for killing - both physically and culturally.

ABOVE: Anton Forde, *Papare Eighty.one*, 2024, at Pātaka Art + Museum. Photo: Mark Tantrum

SCULPTURE PARK

FREE



There is a new addition to the Sainsbury Centre Sculpture Park this summer, with Ackroyd & Harvey's *Beuys' Acorns*. The oak trees are living sculptures

planted in a circle of seven, one of many circles being planted across public spaces in partnership with cultural centres.

Ackroyd & Harvey combine art and activism to address the climate and ecological crisis. *Beuys' Acorns* was initiated in 2007 when Ackroyd & Harvey germinated hundreds of acorns collected from the environmental artwork *7000 Oaks: City Forestation Instead of City Administration* by artist Joseph Beuys.

Between 1982 and 1987, Beuys planted 7,000 trees with help from volunteers in Kassel, Germany. He chose oak for its longevity and connections with ancient Celtic folklore. Beuys believed art could be used to inspire social and political change. Seeing *7000 Oaks* as 'only a symbolic beginning' he hoped it would encourage people to plant trees across the world. His aim was to raise ecological awareness, aid mental wellbeing and improve the environment.

Designed to evolve and continuously benefit the local ecosystem for generations to come, *Beuys' Acorns* creates a natural canopy for creative exploration and for people to meet and exchange ideas.

ABOVE: Ackroyd & Harvey, *Beuys' Acorns* (2007) © courtesy the artist

LIVING AREA / LIVING ART

Free guided tours Tuesday–Sunday, 11am and 2pm
Reserve your place at Gallery Reception

Here at the Sainsbury Centre, we believe art is alive - the first museum in the world to do so.

There is no right or wrong way to meet art or behave in a museum, so allow yourself to connect with art and go on an emotional journey of discovery.

Wander through the gallery in any way you choose. Meet the collection in new and engaging ways, much like you'd meet other people.

Venture into our Living Area and become part of the gallery itself by entering into the glass box.

Recline underneath Alberto Giacometti's painting *Diego Seated* and tell the work a secret you wouldn't tell anyone else.

Forge relationships with art by hugging Henry Moore's *Mother and Child* sculpture, embrace her and hug her.

Connect with your favourite works through the Living Art and Sharing Stories audio tours on Smartify.



For more details, read our Handbook for Living Art or visit: sainsburycentre.ac.uk/whats-on/livingart

LIVING AREA TOURS
Free guided tours Tuesday–Sunday, 11am and 2pm. Reserve your place at Gallery Reception.

ABOVE: A visitor in the Living Area. Photo: Kate Wolstenholme.

SOUNDESCAPES FREE



Imagine your favourite film, or the best party you have ever been to, and take away the music. What would that experience have been without its soundtrack? That's how visiting an art museum can feel like.

SoundEscapes, in collaboration with Sound and Music, saw ten of the UK's most exciting composers commissioned to create a one-minute musical piece which captured the essence of an artwork within the Sainsbury Centre's collection.

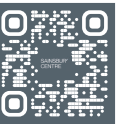
Each object in the collection is able to better tell its life story and engage with audiences in a new and dynamic way. Listen to the compositions via the Sainsbury Centre website, Smartify app, and in the Living Area.

soundEscapes

Sound and Music



SMARTIFY AUDIO TOURS AND OBJECT RECOGNITION FREE

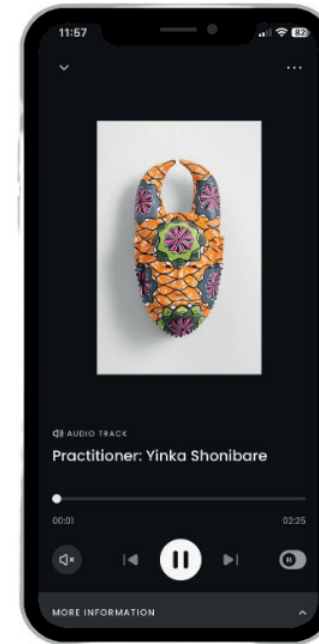
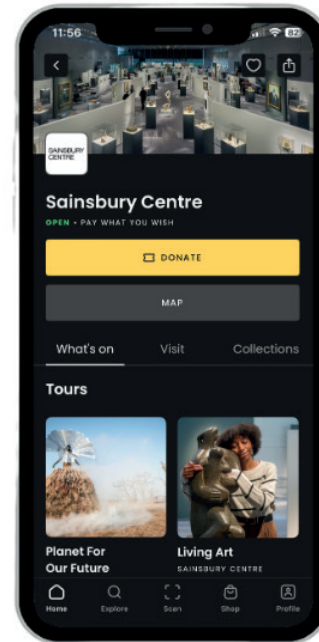


FREE SMARTIFY TOURS

Through the Smartify app, you can listen to our audio experiences and discover new ways to meet the art in our collection.

HOW TO USE

1. Download the free Smartify app at [Smartify.org](https://www.smartify.org) or scan the QR code:
2. Click 'Explore' in the app and search for 'Sainsbury Centre'
3. Browse our audio tours



SCAN AN OBJECT

Just click 'scan' and point your camera at an object to find out more.

You can also save objects you have scanned to your smartphone in a personal digital collection which you can share with others on Smartify.



SPOTLIGHT TOURS

SUMMER 2025



Come along to learn of the stories behind our objects and discover unexpected connections between works.

Each tour highlights one aspect of the iconic Living Area collection, from artist, to region, or medium.

Arrive from 10.30am to enjoy a hot drink and cake in The Terrace, included within your ticket, before the tour begins at 11.00am.

Tickets coming soon! Check our online events page for more details: sainsburycentre.ac.uk

Wednesday 30 July
The Oceans
Ancestral beliefs and our never-ending fascination for the sea. With volunteer guide Jolyon Gough.

Friday 8 August
What's New?
New faces, new ideas, new artists. With volunteer guides Julie Roy and Lynne Middlemiss

Wednesday 13 August
Does it Move?
Artworks that depict or give the viewer a sense of movement. With volunteer guides Matt Cross and Dave Johnson.

Friday 22 August
Where are the Women?
Women, spanning centuries, continents and media – as depicted in the Sainsbury Collection. With volunteer guides Sue Hall and Georgie Livingstone.

Thursday 28 August
Stop! Don't Walk on By?
We consider some not so-easy pieces from the collection. With volunteer guide Andrew Tarbuck.

Tuesday 2 September
Henry Moore
(This is an ENCORE)
The twentieth century British artist who became a worldwide celebrity. With volunteer guide Bo Davis

Tuesday 9 September
Giacometti
Friend, brother, lover and rival. With volunteer guide Caroline Robson.

Tuesday 16 September
The Art of China
Take a good look at the ancient Chinese art in the Sainsbury Collection. With volunteer guide Linda Chapman.

SCUPTURE PARK

Inside and Outside Sculpture Tours–New Tours

SCULPTURE PARK TOURS
Join one of our knowledgeable and enthusiastic volunteer guides for a walking tour through our beautiful parkland. Discover more about important works by notable artists such as Henry Moore, Elisabeth Frink, Anthony Caro, Ro Robertson and Antony Gormley.

TOUR DATES
Saturday 24 May
Jenni Brace

Wednesday 11 June
Andy Maule

Thursday 19 June
Polly Gould and Sue Torr
Saturday 28 June
Carol Hinds

Friday 4 July
Carol Hinds and Julie Roy

Thursday 17 July
Polly Gould and Carol Stephenson

Wednesday 6 August
Cathy Merry

Friday 15 August
Carol Stephenson and Julie Roy

Saturday 23 August
Bo Davis

FAMILY FRIENDLY SCULPTURE PARK TOURS
Free guided sculpture trail for families, with activities and stories along the way. Places are limited and booking is essential.

Please reserve one free space for each child who will be taking part.

All ages are welcome, but this tour is particularly suitable for 7 to 11 year-olds.

DATES:
Saturday 21 June
Chris Jones

Saturday 19 July
Carol Hinds

Friday 8 August
Carol Hinds

Thursday 21 August
Polly Gould

The tours will also be available as part of the range of activities on Big Sunday, Sunday 1 June with Chris and Carol. For Big Sunday only, tours will be available on a first come first served basis.



LEARNING: CHILDREN AND FAMILIES

Visit sainsburycentre.ac.uk for details

BIG SUNDAY

Join us on the first Sunday of every month for an event with activities for all ages. For families: Meet an artist to explore artworks and ideas. Adults and young people aged 15+:

Explore our new community space and take part in a collaborative project.

Pop in at any time during the morning.

FREE; no need to book.

DATES

1 June 10.30am-12.30pm
Sea Stories family activity with Alex Day and Family Sculpture Park Tours

6 July 10.30am-12.30pm
Sea Stories family activity with Anna Brass

3 August 10.30am-12.30pm
Summer family activities

24 August 10.30am-12.30pm
Summer family activities



LEARNING: CHILDREN AND FAMILIES

Visit sainsburycentre.ac.uk for details



MINI STUDIO

Term-time workshops for parents, carers, and preschool children. Take part in relaxed guided exploration followed by multisensory play with a Sainsbury Centre artist.

DATES

13 May
10.30am-12pm
Sea Monster
with Rose Feather

10 June
10.30am-12pm
Waves
with Abby Page

08 July
10.30am-12pm
Watery World
with Dot Howard

TICKETS

Bookings open at the beginning of every month on our website. Tickets cost £10 per child, up to a maximum of £25 per family.

Whilst we make every effort to ensure that this information is up to date, we recommend that you check our website before attending or booking Children and Families events.

LEARNING: CHILDREN AND FAMILIES

Visit sainsburycentre.ac.uk for details

**Creative Holiday Fun
Family Studio**
24 May
10.30am-4pm
Ocean Telegraph

An artist-led workshop for all the family, Come along to explore *A World of Water* together, and make collaborative artworks about water and words with associate artist Jess Morgan. Suitable for families with children aged 5-11.

TICKETS

Book in advance on our website. Tickets work on our Pay If and What You Can basis.

Young Artists' Studio (7-11)
29 May
10.30am-3.30pm
Sea Sound Scapes

What do the seas have to say to us? Spend a day at the Sainsbury Centre with associate artist Johann DonDaniel. Explore sound through sea water, movement and words. Experiment with sound technologies and work together to create an intriguing hydro acoustic world. Suitable for ages 7-11.

TICKETS

Book in advance on our website, pay what you can.



ABOVE: Young Artist Studio. Photo: Rach Anstey-Sanders

LEARNING: YOUNG PEOPLE

Visit sainsburycentre.ac.uk for details



Young Artists' Studio (12-16)
29-31 July
10.30am-4pm
Can the Seas Survive Us?

During this three-day workshop, you'll develop your own project with support from three Sainsbury Centre associate artists: Marnie Hardy; Ian Brownlie and Rose Feather. Use a range of techniques including drawing and digital

photography to create works on paper in response to our *Can the Seas Survive Us?* exhibition season. Experiment and develop your ideas alongside other young artists. Learn book-binding techniques to finish your work ready to display in the Living Area.

TICKETS

FREE, booking essential on our website.

**Museum Late:
Hydromachy**
Curated by artist
Harun Morrison
Thursday 12 June

6-8pm
FREE, booking essential

An evening of contemporary performance, music, and film that explores our relationship to the sea.

ABOVE: Visitors at the *A World of Water* exhibition. Photo: Kat Mager.

THE SHOP

Visit sainsburycentre.ac.uk for details

The Sainsbury Centre Shop stocks a wide range of products, from contemporary ceramics and handmade jewellery to greetings cards, art books, and children's toys.

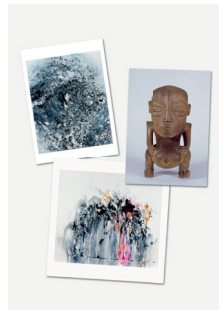
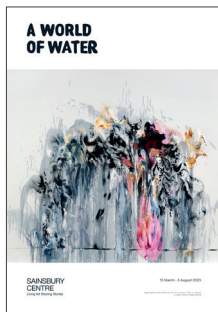
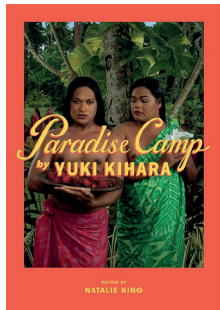
Explore our range of exhibition catalogues, from past and present exhibitions.

Delve deeper into the big questions explored through our exhibition series so far, including *What is Truth?* and *Why Do We Take Drugs?*

Shop our range of exhibition merchandise and bespoke souvenirs, our shop stocks a range of art supplies, sketchbooks, and drawing guides.

*Members get 20% off their purchase**

*Exclusions apply



THE TERRACE CAFE

Tuesday–Friday: 9.30am–4.30pm

Saturday–Sunday: 10am–4.30pm



Sit back and enjoy the countryside views from the Terrace Cafe, with coffee from multi-award-winning roasters Square Mile, serving a menu of popular espresso-based drinks, and single origin filter coffee.

Alternatively, you can choose from our wide range of refreshing soft drinks and teas provided by the Norfolk Tea Co.

Treat yourself to our delicious pastries, including croissants and Danishes.

In addition, explore our selection of sweet and savoury snacks sourced from top suppliers in the region, featuring cakes and scones from amazing Hestia Patisserie and Sticky Fingers Blinding Bakes.

If you're out walking your dog, pop into the Terrace Cafe for a takeaway drink and treats for your four-legged friend!

Members receive a 10% discount on their entire order.

BECOME A MEMBER

Join us today

Visit sainsburycentre.ac.uk/members for details

FREE
WELCOME
PACK

Whether you are gifting a loved one or treating yourself, experience more from the Sainsbury Centre with our memberships. With an annual membership, you can enjoy a year filled with art.

Each membership comes with a free welcome pack and includes the following benefits:

Benefits

- Free and unlimited entry to the Sainsbury Centre and all special exhibitions
- Special exhibition previews
- Priority booking for tours and events
- 20% discount in the Sainsbury Centre Shop*
- 10% discount at the Terrace Café
- Member exclusive newsletter
- Exclusive events, talks, and tours
- Members-only parking permit

Annual Membership

- Individual | £45
- Individual +1 | £50
- Individual + Guests | £75

Young Membership (for under 30s)

- Individual | £35
- Individual + 1 | £40
- Individual + Guests | £70

Student Membership

Free student membership is available to all UEA and Norwich University of the Arts students

Join us today:

sainsburycentre.ac.uk/members
Call 01603 593199
or email us at scva@uea.ac.uk



ABOVE: Artists Nabuurs & Vandoorn during the launch of *Can the Seas Survive Us?* Photo: Kat Mager

MODERN LIFE CAFE

Tuesday–Friday: 9am–5pm

Saturday–Sunday: 10am–5pm



Modern Life Café

Enjoy our west end restaurant and look out onto our sculpture garden.

From morning pastries through to a premium menu serving sourdough toasties, salad bowls, full counter service hot lunch and homebaked cakes and scones, the Modern Life Café has you covered for every mood.

Picnic boxes and pizza deals are available for children, plus top quality espresso-based coffees, luxury hot chocolates and a range of loose-leaf and fresh teas all on offer alongside a range of soft drinks, wines, beers and cider.

Venue Hire

The iconic architecture of the Sainsbury Centre makes our venue the perfect setting for any special event. We can host corporate events, group visits, location filming, studio workshops and more, as well as offering a range of catering and accommodation options.

If you would like to contact us about booking an event, please email Laszlo Szucsko, Cafe, Events & Hospitality Manager: l.szucsko@uea.ac.uk



TOP: Sainsbury Centre, Modern Life Café. Photo: Pete Huggins
ABOVE: Food in the Modern Life Café. Photo: Jose Hindle

Support the Sainsbury Centre and help bring amazing art to life!

The Sainsbury Centre exists thanks to the generosity of others, from the gift of Lord and Lady Sainsbury in 1973 to the current day support of individuals, trusts and foundations, and corporate partners. This support enables the Centre to stage world-class exhibitions, to deliver inclusive family and communities programmes, and produce radical new content on our digital channels and in the museum space.



If you are interested in supporting the Sainsbury Centre and enable more people to experience groundbreaking art, please contact:

SC.Development@uea.ac.uk

Testaye Urgessa at the launch of *Darwin in Paradise* Camp. Yuki Kihara. Photo: Kat Mager

HEAR MORE

For Living Art in your inbox, sign up to our newsletter



Be the first to hear about new exhibitions and exciting events at the Sainsbury Centre

Sign up today:
sainsburycentre.ac.uk/sign-up

SoundEscapes launch at the Sainsbury Centre. Photo: Kate Wolstenholme

VISITOR INFORMATION

Visit sainsburycentre.ac.uk for details

INFORMATION

Sainsbury Centre
University of East Anglia,
Norwich Research Park,
Norwich NR4 7TJ

01603 593199. Lines open
Monday–Friday 10am–5pm

OPENING TIMES

Tuesday–Friday 9am–6pm
(Special exhibitions open at 9.30am)

Saturday–Sunday 10am–5pm
Closed Mondays, including
Bank Holidays

ENTRY

Enjoy the Permanent Collection, all special exhibitions, and our Sculpture Park with our Universal Ticket. Tickets are on a 'Pay If and What You Can' basis, meaning you choose how much you'd like to pay, and are available at the Gallery Reception. No prebooking is required. For additional access needs, please contact us at scva@uea.ac.uk or call 01603 593199. If you are a member, please present your membership card at Gallery Reception. As a non-profit museum, we rely on ticketing income to support all our activities.

PLAN YOUR VISIT

ACCESS

There is level access on the ground floor to our Permanent Collection, Modern Life Cafe, Sainsbury Centre Shop, Terrace Cafe, and accessible toilets. There is lift access to the Mezzanine Gallery, and lift and ramp access to the Lower Galleries.

MODERN LIFE CAFE

Monday closed
Tuesday to Friday:
9am – 5pm
Saturday and Sunday:
10am – 5pm

THE TERRACE CAFE

Monday closed
Tuesday to Friday:
9.30am – 4.30pm
Saturday and Sunday:
10am – 4.30pm

Last orders taken at 4pm

PARKING

Visitors can park at any publicly accessible car park on campus free of charge but are asked to register their vehicle number at reception within 2 minutes of parking.

ANNOUNCEMENTS

SCHOOL VISITS

School visits to all our exhibitions are welcome throughout the year. For more information on school visits and workshops, please email:
scvagroupvisits@uea.ac.uk

VENUE HIRE

The Sainsbury Centre regularly hosts corporate events, group visits, location filming, studio workshops and more. To contact us about booking an event and our range of catering options, please email:
events.scva@uea.ac.uk

GROUP BOOKINGS

We welcome visits from larger groups. If you would like to make a group booking, please email:
scva@uea.ac.uk

CONNECT WITH US

Join us on social media
Search [@sainsburycentre](https://www.instagram.com/sainsburycentre)



COVER: Trevor Shimizu, *Clouds*, 2023
Courtesy the artist, 47 Canal, New York; Modern Art, London; Tia Collection

